

News on 6th Student Webinar Workshop on Social Integration in Multi-ethnic Neighbourhoods in Canada

The students who enrolled in GEG 4920 Urban Geography Field Camp presented their final research projects at the 6th Student Webinar Workshop on Social Integration in Multi-ethnic Neighbourhoods in Canada on October 7th 2020. In the past five years, Dr. Huhua Cao hosted the field camp in Montreal, and the students chose one neighbourhood in Montreal to study. However, due to the COVID-19 pandemic, the field camp was offered in an online format. This year, students had the opportunity to learn a community in the city where they live during the course period. This new reality allows students to explore a diverse range of communities that fit their own interests.

Tonton Mundele, trade commissioner at Global Affairs Canada, and Jean-Marie Cishahayo, research fellow at the University of Ottawa, joined the webinar as commentators. Dr. Mundele and Mr. Cishahayo are both immigrants to Canada. They both have extensive experiences in the field of urban geography, and they are also the key members of the International Conference on Canadian, Chinese, and African Sustainable Urbanization (ICCCASU). During the webinar, Mr. Mundele and Mr. Cishahayo shared their immigration experiences and feedback on the research projects.

Four students in the field camp presented their research projects. Dolly Cepeda studies the English language development within the South Asia community in Laurel, Edmonton. Brooke Thompson examines the social integration of immigrants in Oakville, Ontario. Jade Sullivan explores the unique ways linguistic barriers impact the social integration of the Filipino community in Côte-des-Neiges, Montreal. Jeffrey Wong studies intergenerational Africa and the Middle East immigrant families experience in Cummings-Cyrville, Ottawa. To adapt to the COVID reality, Students learned to design and collect surveys through SurveyMonkey and conduct interviews through telephone and video chat during the field camp. This new online field camp format brings a new possibility for future students and helps them gain the skills to do qualitative research remotely.

The record of this webinar can be access through: https://uottawa-ca.zoom.us/rec/share/Z8xNjDE-H-0t3UK5OTK9EEESRpt9Y77Eq3E3opqYtx0lxSTyo04IZVZrVxTHPCzU.Z_R6UzWvR0UIjz0



Oakville
Ontario

Laurel
Edmonton

Côte-des-Neiges
Montreal

Cummings-Cyrville
Ottawa

webinar workshop

The Department of Geography invites you to

6th Student Workshop on Social Integration in Multi-ethnic Neighbourhoods in Canada:

New reality in the Pandemic Contexts

Wednesday, October 7, 2020

18:00 - 20:00 EST

Zoom meeting ID: 964 3478 2944 Passcode: geg4920

[Click here to join the Zoom meeting](#)

Chair:

Huhua Cao: Professor, Department of Geography, University of Ottawa

Commentators:

Tonton Mundele: Trade Commissioner, Global Affairs Canada

Jean-Marie Cishahayo: Research Fallow, University of Ottawa

Organizer:

Haotian Guan: Ph.D. Candidate, Department of Geography, University of Ottawa



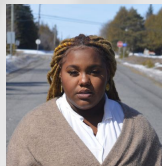
Looking at English language development within the South Asian community in Edmonton

Dolly Cepeda



Understanding social integration of Indian immigrants in Oakville, Ontario

Brooke Thompson



The unique ways linguistic barriers impact the social integration of the Filipino community in Côte-des-Neiges, Montreal

Jade Sullivan



The immigrant experience and cultural identity in Ottawa: A study of intergenerational immigrant families from Africa & the Middle East

Jeffrey Wong



Recording...

Chair:
Huhua Cao: Professor, Department of Geography, University of Ottawa

Commentators:
Tonton Mundele: Trade Commissioner, Global Affairs Canada
Jean-Marie Cahahayo: Research Fellow, University of Ottawa

Looking at English language development within the South Asian community in Edmonton

Dolly Cepeda

Understanding social integration of Indian immigrants in Oakville, Ontario

Brooke Thompson

The unique ways linguistic barriers impact the social integration of the Filipino community in CSte-des-Neiges, Montreal

Jade Sullivan

The immigrant experience and cultural identity in Ottawa: A study of intergenerational immigrant families from Africa & the Middle East

Jeffrey Wong

A grid of video thumbnails for a Zoom meeting. The thumbnails are arranged in three rows and three columns. The names of the participants are visible below each thumbnail: Jeffrey Wong, Huhua Cao, Dolly Cepeda Mo..., Brooke Thompson, Haotian Guan, Jean-Marie Cishahayo, Jade Sullivan, Tonton, and Malaika Drosario.

Zoom Meeting

Recording...

ASSESSING ENGLISH LANGUAGE DEVELOPMENT OF SOUTH ASIAN IMMIGRANTS IN EDMONTON

DOLLY CEPEDA MONTUFAR

OCT 7 2020

UNIVERSITY OF OTTAWA

Dolly Cepeda Montufar

Taskbar: Windows, Search, File Explorer (Geg3506), Chrome, Edge, L, W (Geg4920-FL...), Mail, Calendar, Zoom Meeting (96%), ENG CMS 2020-10-07 6:08 PM

Zoom Meeting | You are viewing Dolly Cepeda Montufar's screen | View Options

Recording...

ETHNIC SPATIAL SEGMENTATION IN EDMONTON

- Focused in south east Edmonton and in university of Alberta region
- Laurel has a primary South Asian concentration, 60% of the population
- Ethnic enclave favours suburban area where new housing developments are common
- High socioeconomic status, high homeownership rate

EDMONTON
IMMIGRANT CONCENTRATION AREAS

Source: Municipal Planning Department, 2010

Base Map Source: City of Edmonton Planning Dept., 1988

Dolly Cepeda Montufar

Mute | Stop Video | Security | Participants (10) | Chat | Share Screen | Pause/Stop Recording | Reactions | Leave

Zoom Meeting | Recording...

Understanding Social Integration of Indian Immigrants in Oakville, ON

Brooke Thompson
GEG 4920
University of Ottawa
October 7th, 2020

Slide 1 | C.S.A. | Notes | Polls | Captions | Tools | EXIT

Jeffrey Wong | Huhua Cao
Dolly Cepeda M... | Brooke Thompson
Jean-Marie Clshah... | Jade Sullivan
Haotian Guan | Tonton

Recording... You are viewing Brooke Thompson's screen

Religion	1st generation	2nd generation	3rd generation
No religious affiliation	~2	~8	~33
Catholic	~8	~23	~23
Muslim	~23	~18	~4
Hindu	~30	~21	~4
Sikh	~28	~36	~8

Despite a variety of religions, the majority of people said religion was an important aspect of their life

View Options Speaker View Exit Full Screen

Jeffrey Wong Huhua Cao Dolly Cepeda...
 Brooke Thompson Jean-Marie Cish... Jade Sullivan
 Tonton Haotian Guan Malaika DRosario
 Yulun Wu shailasafaecha...
 Leave

Mute Stop Video Security Participants 11 Chat Share Screen Pause/Stop Recording Reactions

Recording...

The Immigrant Experience and Cultural Identity in Ottawa: A Study of Intergenerational Immigrant Families from Africa & the Middle-East

GEG4920 Field Course Presentation – By Jeffrey Wong
 University of Ottawa Department of Geography, October 7th, 2020

View Options Speaker View Exit Full Screen

Jean-Marie Cishah... Huhua Cao
 Jade Sullivan Brooke Thomps...
 Jeffrey Wong Yulun Wu
 Tonton Dolly Cepeda M...
 Haotian Guan


Recording... You are viewing Jeffrey Wong's screen View Options

Speaker View Exit Full Screen

Recommendations

- With linguistic diversity growing in Canada, social services should better reflect the demographic.
- Increase sustainable opportunities for social capital.
- Better management of community upkeep to maintain healthy environments and well-being of residents.

Limitations: COVID, small sample size



Haotian Guan Huhua Cao
Dolly Cepeda M... Brooke Thomps...
Jean-Marie Cishah... Jade Sullivan
Yulun Wu Jeffrey Wong

Tonton


Unmute Stop Video Security Participants 9 Chat Share Screen Pause/Stop Recording Reactions Leave

Recording... You are viewing Jade Sullivan's screen View Options

Gallery View Exit Full Screen
Gallery View (Alt+F2)

The unique ways linguistic barriers impact the social integration of the Filipino community in Côte-des-Neiges, Montreal

OCTOBER 7TH, 2020
UNIVERSITY OF OTTAWA



Jade Sullivan
BA Honours Geography & Women's Studies

GEG4920: HUMAN GEOGRAPHY FIELD CAMP | SOCIAL INTEGRATION IN MULTI-ETHNIC NEIGHBOURHOODS IN CANADA


Jade Sullivan

Mute Stop Video Security Participants 9 Chat 1 Share Screen Pause/Stop Recording Reactions Leave

Recording... You are viewing Jade Sullivan's screen View Options Speaker View Exit Full Screen

Recommendations

GE6450: HUMAN GEOGRAPHY FIELD CAMP: SOCIAL INTEGRATION IN MULTI-ETHNIC NEIGHBORHOODS IN CANADA



- ✓ **Municipal recommendations.**
 - Events and social spaces focused on cultural differences
 - Community resources that are accessible
 - Employment opportunities for English speakers
 - Culturally accessible services
 - Awareness of cultural differences
- ✓ **Federal recommendations.**
 - Budget expenditures focused on new immigrants and social integration
 - Free comprehensive French and English classes
 - Wellness checks with new immigrants
 - Up-to-date resources for new immigrants
 - Employable skills and technique trainings

Haotian Guan Huhua Cao
Brooke Thom... Jade Sullivan
Yulun Wu Jeffrey Wong
Tonton Dolly Cepeda M...
Mute Stop Video Security Participants Chat Share Screen Pause/Stop Recording Reactions Leave